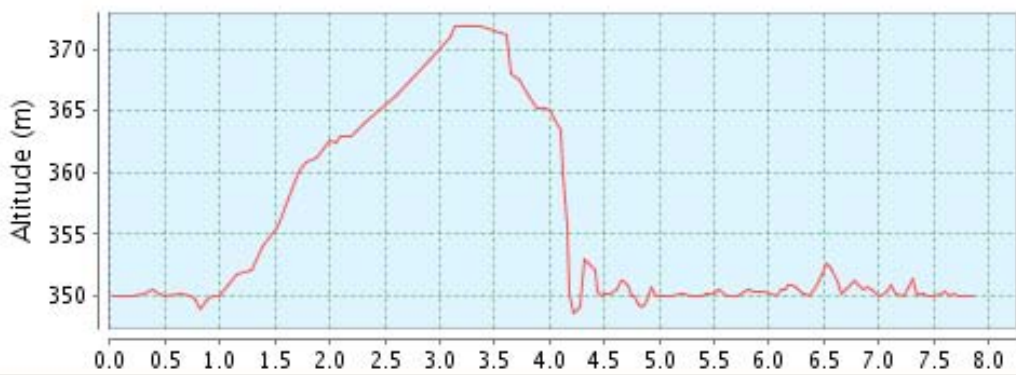
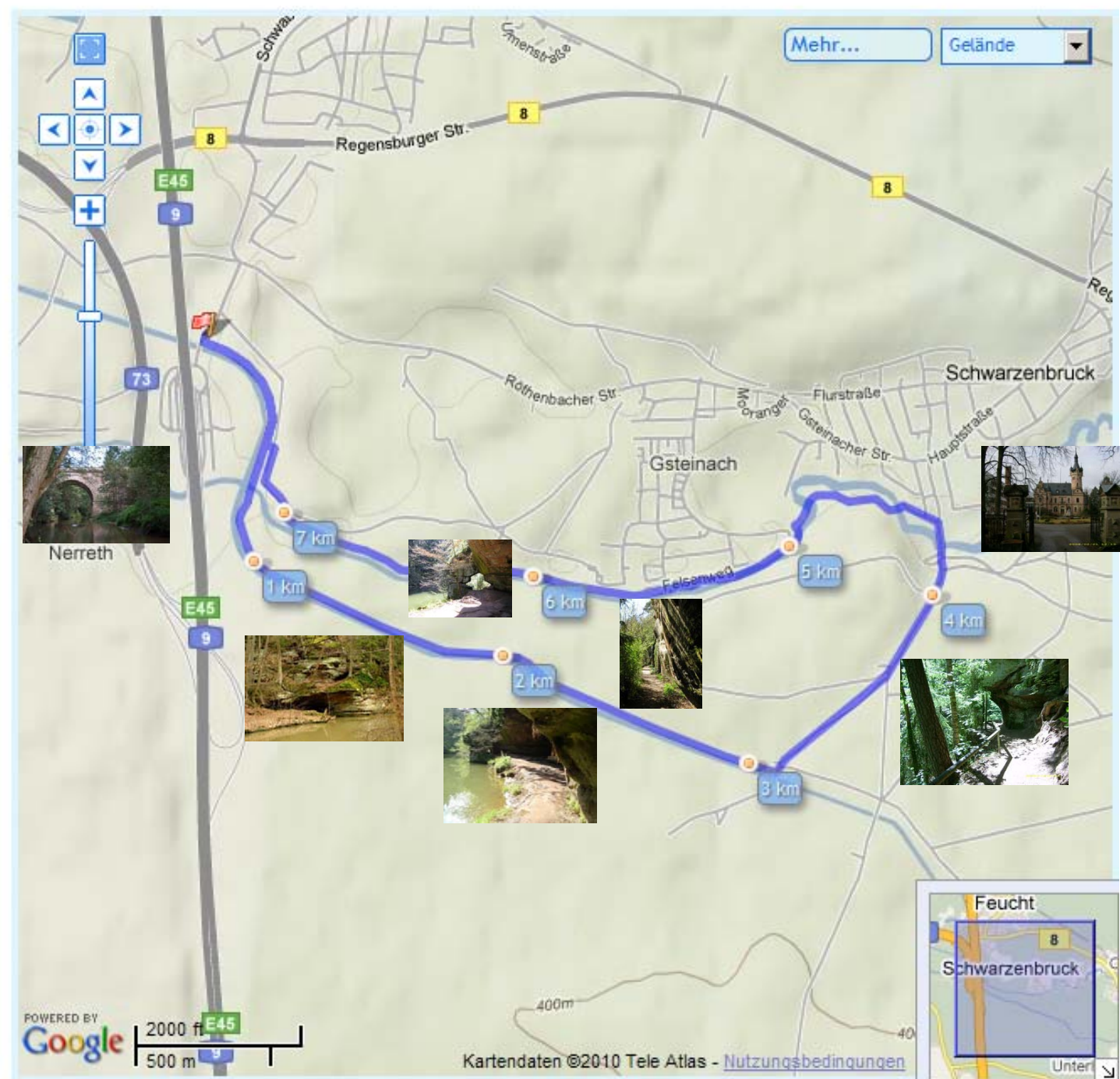


 [Wandern] Bruckkanal - Alter Kanal - Schwarzach - Schwarzachtal - Bruckkanal von Wolfermann - 7  
Rundkurs - 7,85 km

Deutschland , 90537 Feucht, Bayern, Mittelfranken, Landkreis Nürnberger Land



Schleuse bei Feucht



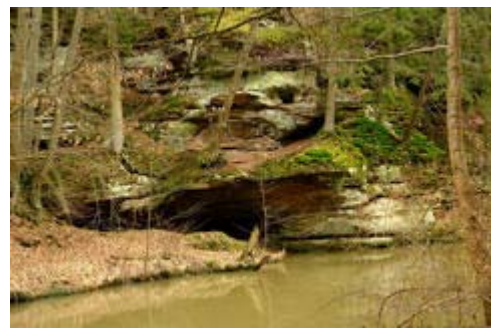
Faberschloss



Brückkanal



Schwarzachklamm



Schwarzachtal

